

Ask for your solutions!

ASK

Corporation

ASK Corporation



American ADM, Inc.

ASK
Corporation

Corporate Profile

Incorporated	December 1997
Executive Officer	Kazuhiko Muto, President
Paid Capital	¥15,000,000
Employee	29
Location	Casa De Taku Bldg, 1F, 2-4, Goban-Cho, Chiyoda-ku, Tokyo, Japan 102-0076 Tel: +81-3-5215-5650 Fax: +81-3-5215-5651 URL: http://www.ask-corp.co.jp
Main Customers	IBM Japan, Fuji Xerox, EPSON Direct, Kaga Electronics, Canon Sales, Sofmap, Marubeni Infotec, Softbank Commerce, Daiwabo Information Systems and more
Banks	SMBC, Mizuho, UFJ, Tokyomitsubishi
Affiliated Companies	American ADM, Inc. ASK-Korea Dorfield Internatioal

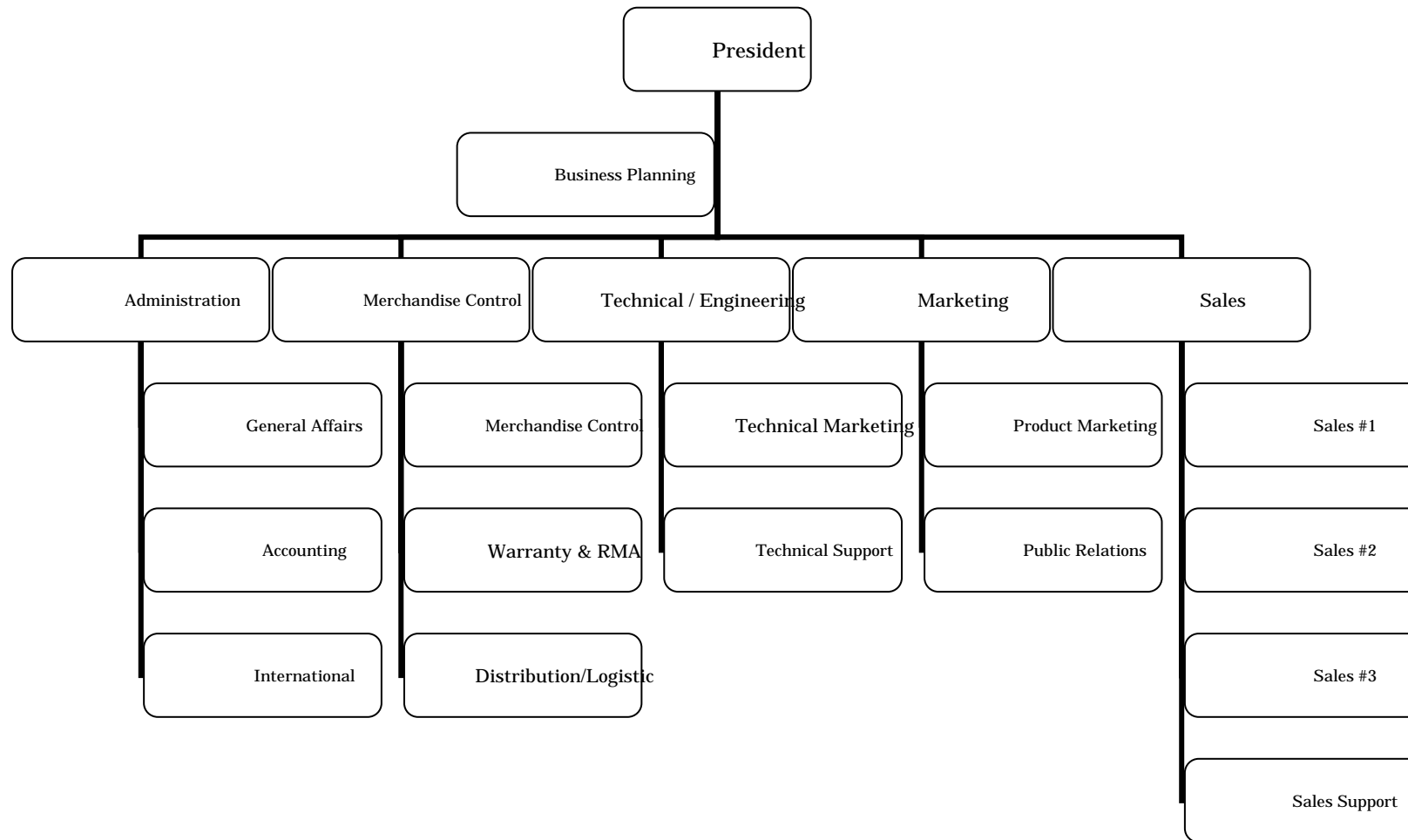
Overview

- ASK Corporation
 - Aggressive Sales and Distribution Team
As a Marketing, Sales, Technical support and Distribution center, ASK has established STRONG and LONG TERM PARTNERSHIP with key accounts, manufacturers and customers.
 - Full Technical and Customer Support
Experienced, knowledgeable and aggressive sales and support staff.
- American ADM, Inc.(USA)
 - Expert Marketing and Localization
 - Strong financial record for IPO
- ASK-Korea(2005~)
 - Expert Marketing and Localization
 - Strong financial record for IPO
 - ASK-Korea have Sales channel in Korea.
- ASK is currently ATI Technologies' #1 Distributor for sales in Japan. Over 7 Years Relationship

Policies

- **Customer First**
 - We provide products to bring “total” solution and satisfaction to endusers
- **Total Solution Provider**
 - With cutting edge technology.
- **Localization of Products**
 - Brochures /Manuals /Packages /Utility Software
 - JAN Code/SKU of product
 - Apply for safety standards for Japan (VCCI, JEIT, etc.)
- **Strong Finance**
 - Strong 20year financial backing with financial institution.
- **Aggressive Sales**
 - Strategic sales planning to maximize growth.
 - Broad customer base for channel distribution.
- **Teamwork**
 - Working together to build a stronger presence.

ASK Corp Organization Chart



Line of Products *(Manufacturer Listing)*

- **Video Accelerator** ATI Technologies, TuL(PowerColor), Sapphire, Appian, Albatron, ELSA-Japan, LEADTEK, GeCube, XGI
- **Motherboard** Albatron , Sapphire, Asustek
- **TV Tuner/Capture Card**..... ELSA-J, AverMedia, LEADTEK
- **Sound Cards**..... Philips, HITPOINT, Terratec
- **I/O(IDE,SCSI Cards), Adapters**... Asustek, 3Ware, ATTO, Koutech Systems, Keyspan, Informatics, SUNIX, ARECA, LSI, Addologix, PEPPERCON, open-e
- **Ext. HDD Cases** CREMAX, MacPower Peripherals, Lian Li, RAIDON, DataFab, NewMotion
- **PC Case, PowerSupply, etc**..... 3R System, Lian Li, Zalman, TuL, Termaltake, Asustek, T-WIN
- **HDD Duplicator** Logicube, Apricorn
- **Memory, Memory Tester** Triad Spectrum, Apricorn, Apricorn/IBM, Transcend, Simple Technology,
- **Cooling System** 3R System, Zalman, Thermaltake, Asustek
- **Peripherall**..... NYKO, Razer, Ideazon, MonsterGecko, VL System, SoundGraph, Vantec, Pretec, CHERRY
- **Softwares** Mirammer(Desktop DNA), ULTRABAC, PC-DOCTOR
- **Consumer** ROKU, TATUNG
- **Video(DCC)** AJA, HUGE, Medea, Shining Technology, GTechnology, eCinema Systems, MILIDE, Addenda

Marketing Activities

- Exhibit at Tradeshows
- Coordinate Editorial Evaluation
- Coordinate Magazine review and press coverage
- News Release
- Advertisement in various computer magazines
- Provide latest trends and market strategic survey in Japan to manufacturer

Technical and Customer Support

- Full local Technical Support
 - Provide customers with answers for technical questions.
 - Prompt telephone, E-mail and/or fax service
- Full local Warranty
- Full local RMA
 - We have a plan that make RMA center in 2006.
- Product QA on site
- Conduct testing of product to ensure it is 100% fully compatible in Japanese system environment.

ASK Sales Channels

- Dealers/Distributors
 - SI customers
- Mass Merchants
 - Throughout Japan
- PC Specialty Stores
 - Both Windows and Apple shops
- OEMs
- Others
 - Universities / Government

年次売上推移
(1997年度-2005年度)

Unit in Million Yen

